



# BIM

Building Information Modelling

**for energy  
infrastructure**

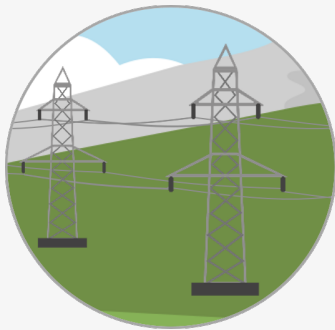
**from 2025,  
projects will  
predominantly be  
realised using the  
BIM method.**

# Neutral.

We rely on IFC (Industry Foundation Class), the non-discriminatory ISO standard 16739. IFC is an important format and schema for the exchange of data and information in digital planning, construction and operation.

# Practical.

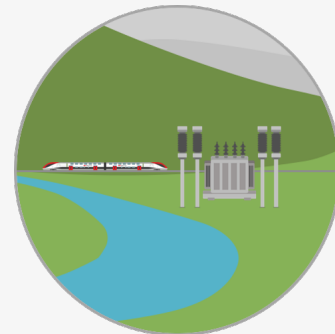
BIM is used at Swissgrid and SBB in various ongoing projects and currently standardised.



Übertragungsleitungen



Kraftwerke



Unterwerke

# Together.

We are going through a joint transformation

All stakeholders along the asset lifecycle benefit from the BIM method

