



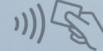
SBB CFF FFS

digitalparking

SwissPass parking – cashless parking in car parks.

Extremely convenient: park at selected
car parks using your SwissPass and
leave your cash at home.

sbb.ch/en/swisspass-parking



Ticket



g

SBB AG

Passenger Division
Sales, Services and Marketing
Gardistrasse 2
3000 Berne 65, Switzerland
SBB Contact Centre 0848 44 66 88 (CHF 0.08/min.)

sbb.ch/en



The advantages for you.



Entering and leaving the car park is quick and easy.



No parking ticket validation required.



Simple billing via your user account.

Here's how easy it is.

1. Hold your valid SwissPass up to the reader at the barrier.
2. The barrier opens.
3. Park in a parking space of your choice.
4. Use your SwissPass to open the barrier again when you leave. The parking fee is displayed and automatically charged to the payment method saved to your account.

You can keep track of your parking fees at any time in your account at [swisspass.ch](https://www.swisspass.ch)

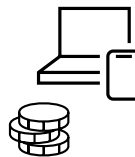
What you need.

To park your vehicle in the selected car parks, you need a SwissPass account and a user account on SBB.ch with a saved payment method.



Step 1: Registering on SwissPass.

Do you already have a SwissPass account? Then you can go straight to step 2. If you don't have a SwissPass account yet, you can register at [swisspass.ch](https://www.swisspass.ch).



Step 2: Register on SBB.ch and save a payment method.

Go to [SBB.ch](https://www.sbb.ch), register under 'Sign in' and save your payment method under 'My account'.

Further information about SwissPass parking and the car park locations can be found at [sbb.ch/en/swisspass-parking](https://www.sbb.ch/en/swisspass-parking).