

Train path requests for cross-border services

**Factsheet
Chêne-Bourg**

Valid from 15.12.2019



Help document

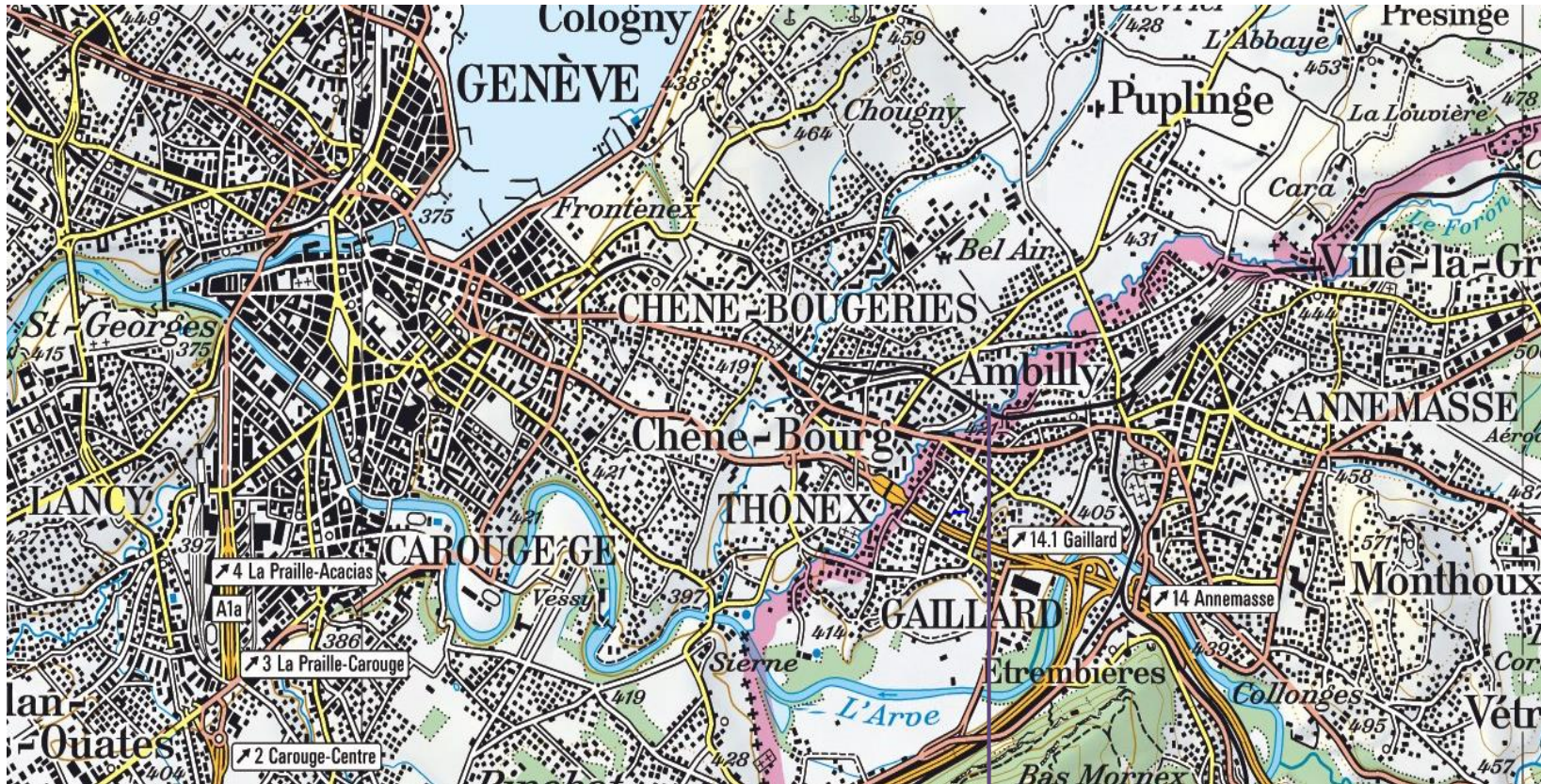
- For additional information (principles for mandatory entries in NeTS, special rules for cross-border passenger services and examples), please refer to the factsheet help document:

[Passenger services help document](#)

[Freight services help document/example](#)

Network connection point Chêne-Bourg

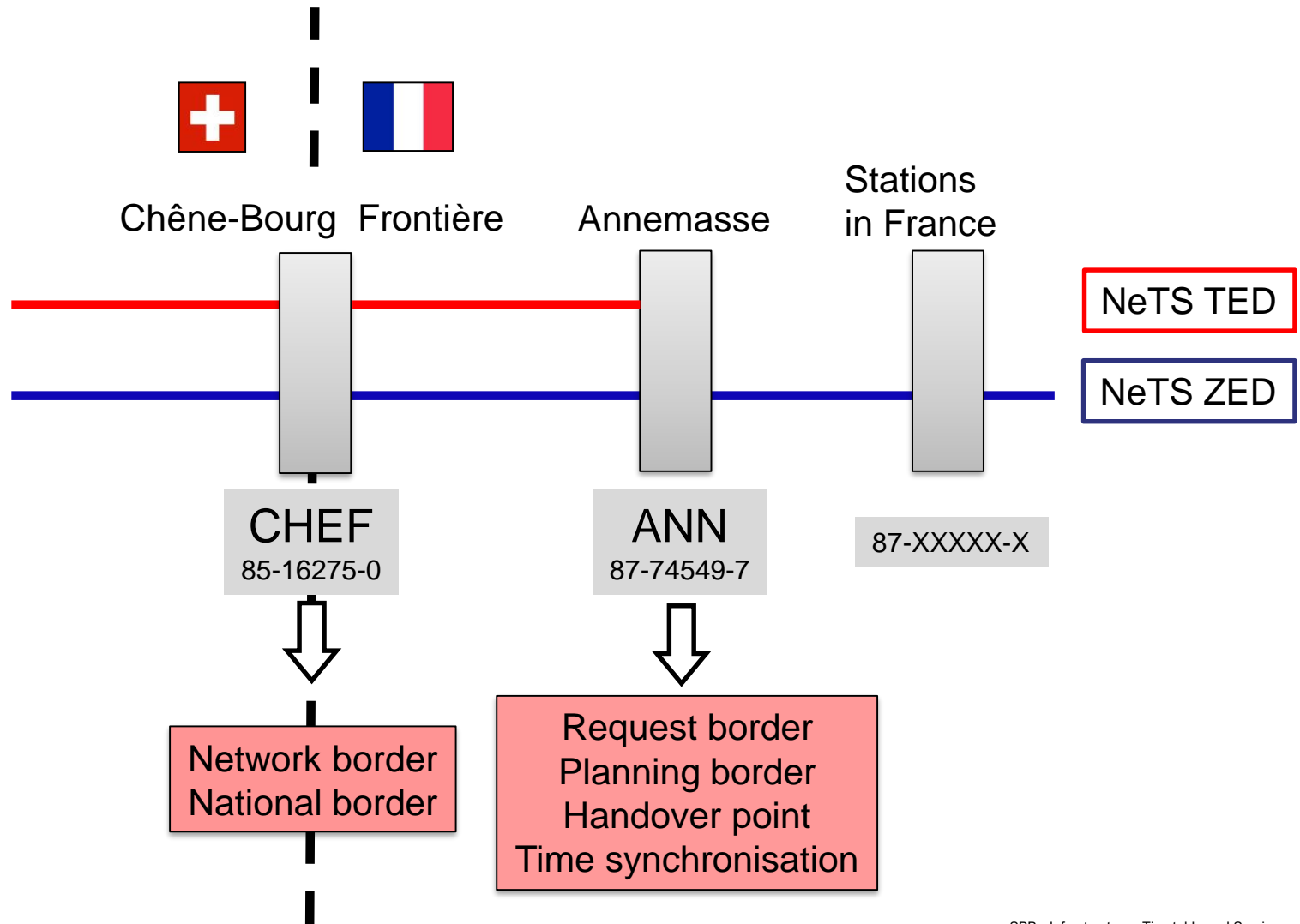
Overview of national and network borders



RFF/SBB network border
 SBB km **74,390**

F/CH national border
 same as network border

Target status diagram



Operating points to be recorded in AVIS (-NeTS)

To enable all the peripheral systems to function properly at the Chêne-Bourg border, it is essential that the following operating points are recorded, depending on the direction of travel.

France → Switzerland Switzerland → France				
Operating point	UIC code	Timetable	Purpose of stop	SMS RU
Stations in France	87-XXXXX-X	hh:mm	Code(s)	
Annemasse	87-74549-7	hh:mm	Yes	Yes
Chêne-Bourg Frontière (CHEF)	85-16275-0	hh:mm	32	Yes

