

Train path requests for cross-border services

FMV Gaggiolo factsheet

Valid from 11.12.2016



Help document

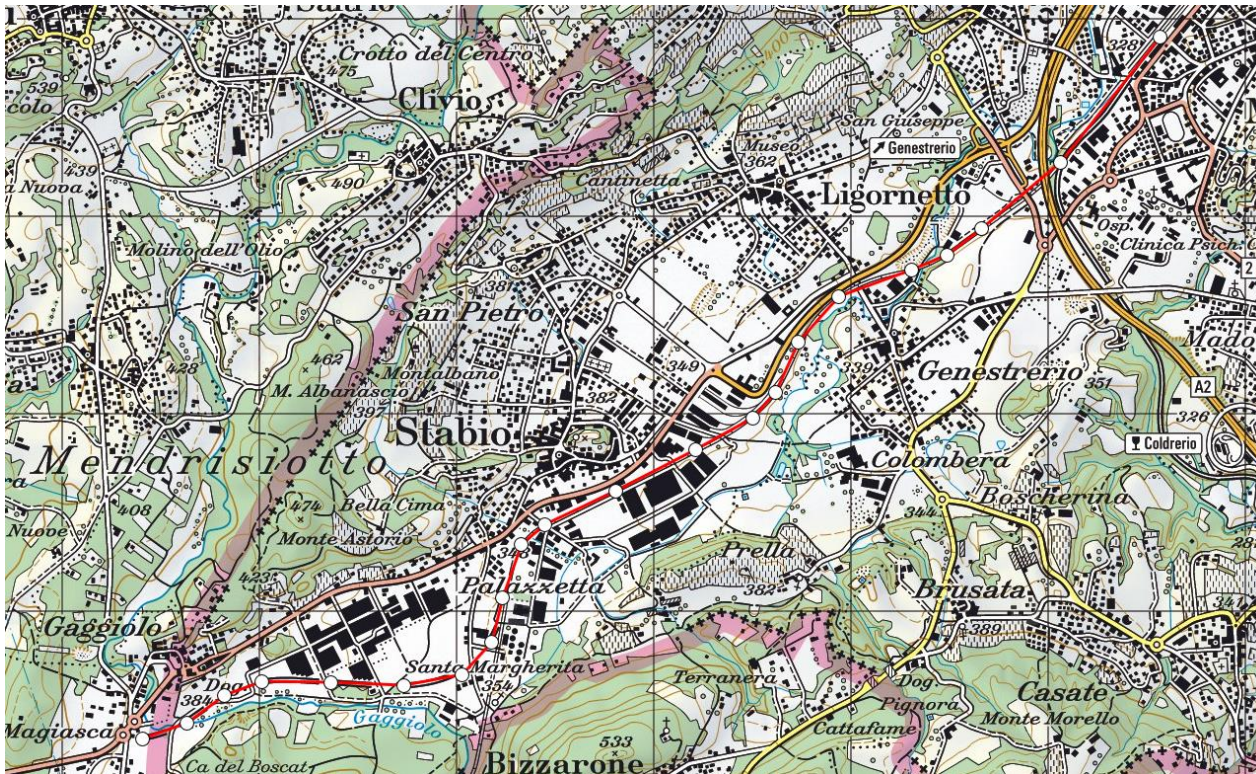
- For additional information (principles of mandatory entries in NeTS, special rules for cross-border passenger services and examples), please refer to the factsheet help document:

[Passenger services help document](#)

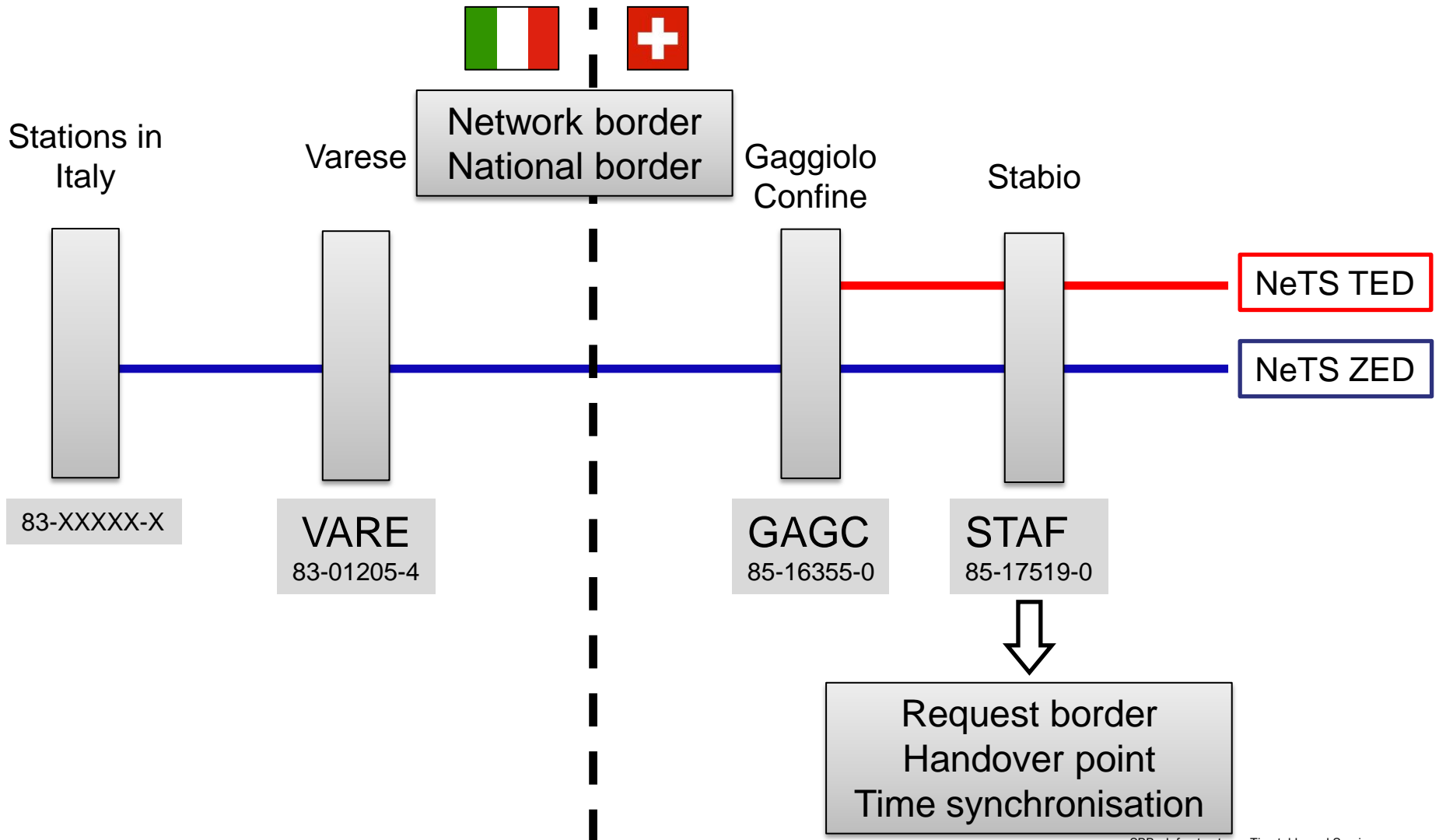
[Freight services help document/example](#)

Network connection point: FMV Gaggiolo

Overview of national and network borders



Target status diagram



Operating points to be recorded in AVIS (-NeTS)

To enable all the peripheral systems to function properly at the FMV Gaggiolo border, it is essential that the following operating points are recorded, depending on the direction of travel.

Italy → Switzerland Switzerland → Italy				
Operating point	UIC code	Timetable	Purpose of stop	SMS-RU
Varese (VARE)	83-01205-4	hh:mm	Code(s)	
Gaggiolo Confine (GAGC)	85-16355-0	hh:mm	32	yes
Stabio (STAF)	85-17519-0	hh:mm	yes	yes

